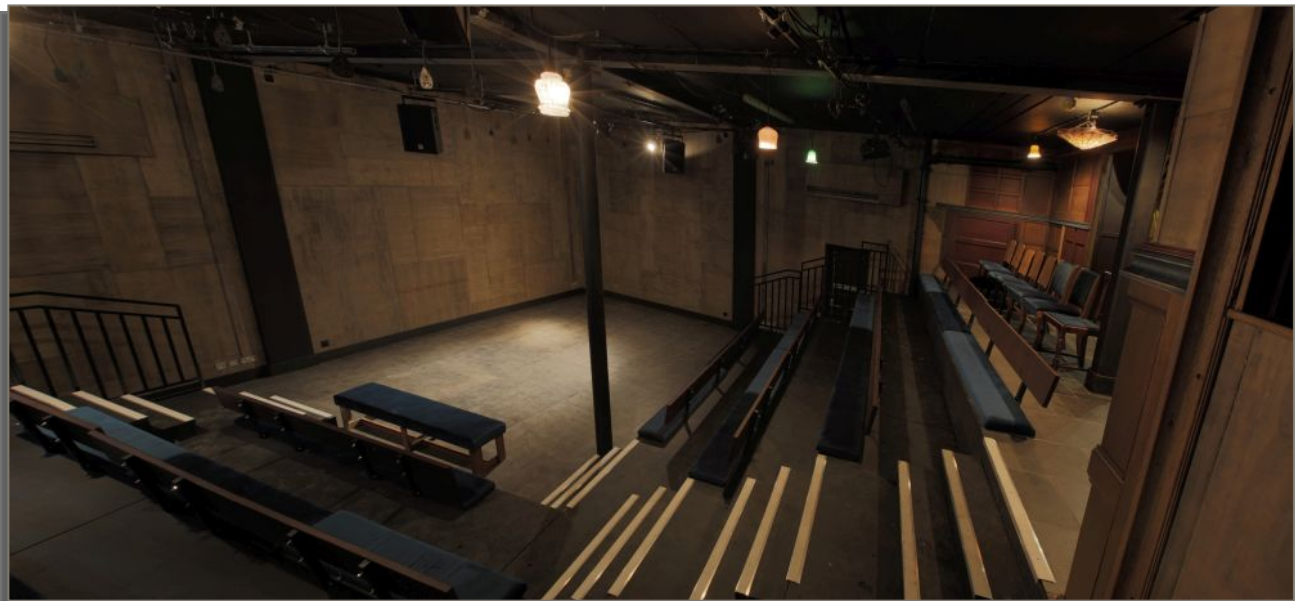


## Tech Spec

### Contact

Chris Collier      Technical & Operations Director  
chris@thewardrobetheatre.com  
07786080234

### The Space



The Wardrobe is an unusual performance space with the stage in the corner and the audience on two sides. The auditorium is currently fixed in this configuration. The capacity is 91 with the fixed banquette seating but can go up to 120 with additional benches, limiting the stage space.

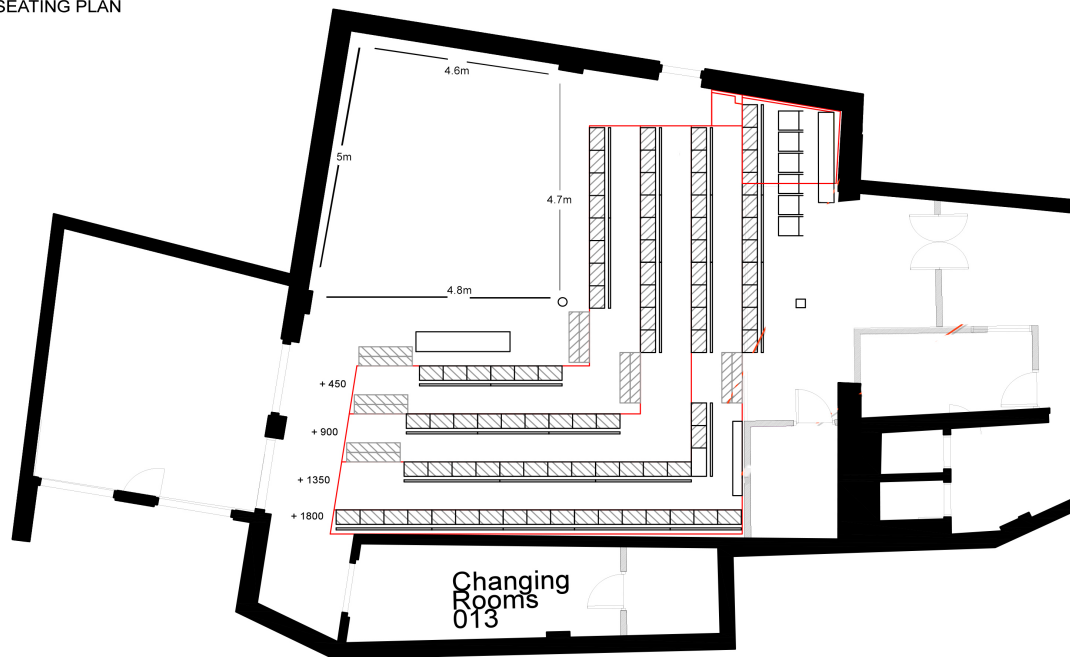
**NOTE: Be aware there is a pillar Down Stage Centre!**

Height to Ceiling 3.65m

Height to Grid 3.4m

Stage area 4.7m x 4.7m approx

## WARDROBE THEATRE | SEATING PLAN



## Backstage facilities

There is one dressing room with a shower, toilet, sink and seating for 4 people. There is a fixed clothes rail and plenty of stage space for props, as well as an iron and ironing board available. There is a kettle and an assortment of cutlery, mugs and plates. There are often several shows on top of each other so the dressing room needs to be kept clean and tidy and artists need to be respectful to other companies things.

## Get In

We have a car park which has direct access to the stage door, located at the at the side of the building on Gloucester lane. There is **only one** allocated space in the car park for the theatre. The code to the gate is **1121**. Get in times will vary and will be confirmed on your booking.

## Smoking In The Workplace

Smoking is prohibited throughout the whole building. Including by actors onstage. If smoking outside, please use the bins provided to dispose of the cigarette butts.

# LX Kit List

Lighting is rigged using 8 x 6 Channel IWB's and 4 additional non wired bars. We have 2 tank traps and some floor stands available.

## Control

- 1 x ETC Nomad
- 8 x Zero 88 betapack

**NOTE:** There are currently **only 44** available dimmer channels.

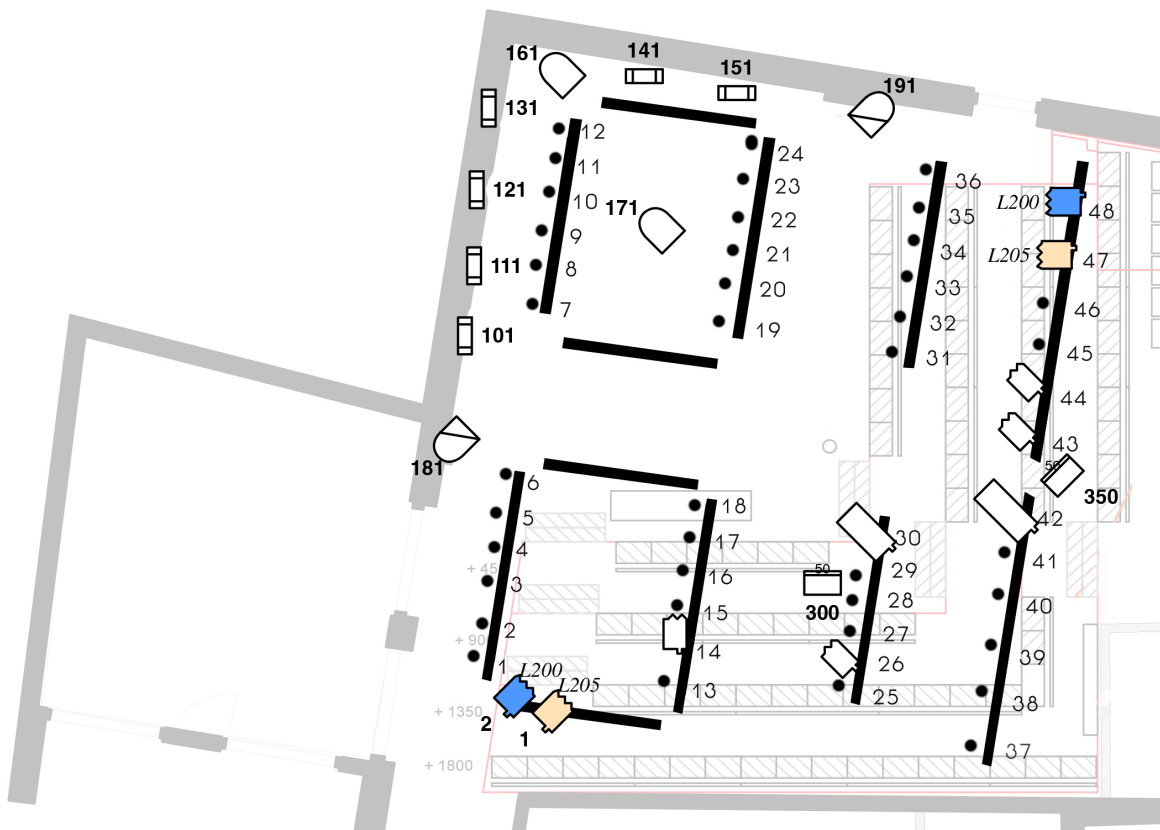
## Fixed Rig

4x Fresnel 500W, 2 x ADB 45/90 Profiles 650W, 4 x Harmony PC 1000W, 2 x LEDj Quad Zoom, 2 x Robe 150, 2 x eLuminate Hex Par , 6 x Slimlite 56 PAR (focused on the Wall)

## Additional Lanterns

- 10 x Various Fresnel 500W (Minim F, Strand F, Minuet), only 12 have barn doors.
- 4 x ADB 45/90 Profiles 650W
- 6 x ADB Fresnel 1000W
- 4 x Harmony Fresnel 1000W
- 2 x Cantata Fresnel 1000W

LX Fixed Rig



- 500w Fresnel
- 1k Fresnel
- LED Slim Par
- ROBE 150
- ADB 45/90 profile
- LEDj Quad zoom
- eLuminate Hex Par

	Ch	Add	ETC Profile	Mode	Colour
Face Light					
SR	14	14	Dimmer		203
CSR	26	26	Dimmer		203
CSL	43	43	Dimmer		203
SL	44	44	Dimmer		203
Warm Side					
SR	1	1	Dimmer		205
SL	47	47	Dimmer		205
Cold Side					
SR	2	2	Dimmer		200
SL	48	48	Dimmer		200
SR Profile					
	29	29	Dimmer		OW
SL Profile					
	42	42	Dimmer		OW
LED Back	201	161	LEDJ Performer 18 Quad	8ch	
LED TOP					
	202	171	LEDJ Performer 18 Quad Zoom	8ch	
LED Side					
SR	203	181	Alu Hex Par64	9ch	
SL	204	191	Alu Hex Par64	9ch	
LED Wall					
SR- SL	211	101	Slimlite 56	8ch	
	212	111	Slimlite 56	8ch	
	213	121	Slimlite 56	8ch	
	214	131	Slimlite 56	8ch	
	215	141	Slimlite 56	8ch	

	216	151	Slimlite 56		
Moving spot/	300	300	Robe 150	Mode 1	
	301	350	Robe 150	Mode 1	
House					
	25	25	Dimmer		

Any and all electrical equipment brought by the company for both on stage or backstage/dressing room use must have evidence of Portable Appliance Testing or cannot be used in the theatre.

## Sound Kit List

### Speakers

- 2 x HK Audio Premium PR:O 15A 600w flown (Foh)
- 6 x JBL Control 1 pro (Surrounds /Monitors)
- 1 x Em115 (subs)
- 2 x the box pro Mon A12 350w (Stage Monitors)

### Amps

- 1 x QSC Rmx 1450 amplifiers
- 1 x CXA6 6 x 120W Amplifier

### Desk

- 1 Behringer X32 Compact
- 1 Alto ZMX122FX 8 Channel Mixing Desk (for stage use)
- 1 s16 Digital Stage Box
- 1 Mac Mini with Qlab 4 (pro audio/video license)
- 3 SM58 microphones
- 2 SM57 microphones
- 4 PG58 Wireless handheld microphones
- 6 DI's

## AV

- 1 Epson EB-S03 2.7k Lumen Projector (flown)
- 1 2.4m x 1.35m 16:9 projection screen
- 1 20m HDMI cable to tech box
- 1 10m HDMI cable to stage
- 1 20m VGA cable to tech box